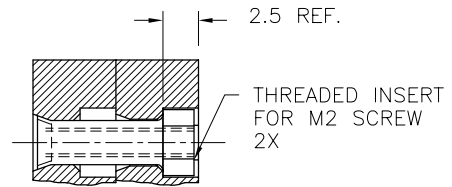
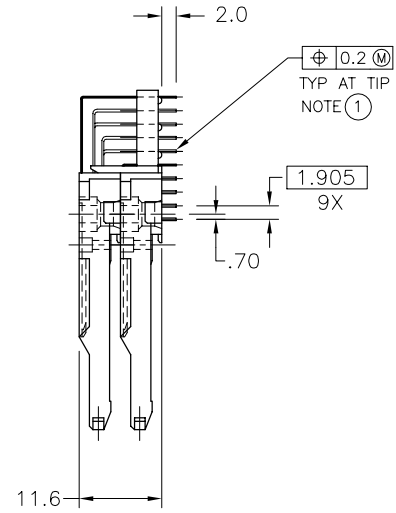
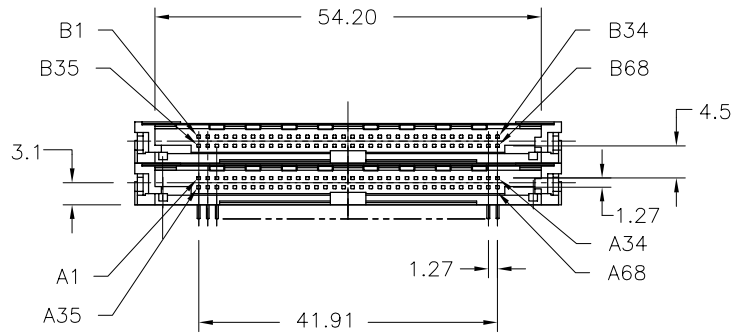
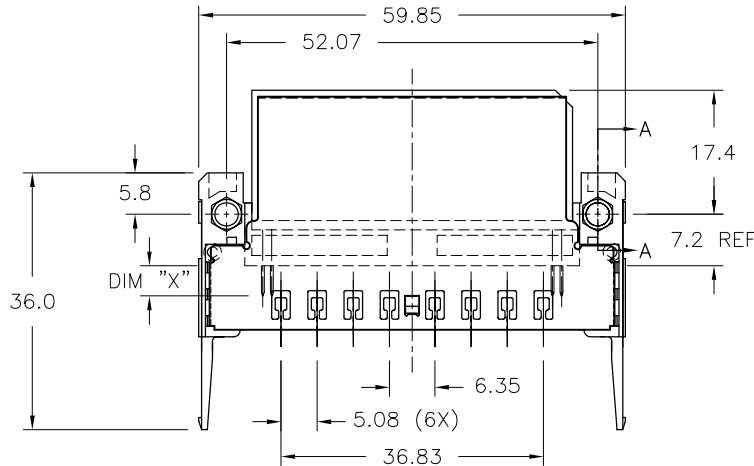


Tous droits strictement réservés. Reproduction ou communication à des tiers interdite sous quelque forme que ce soit sans autorisation écrite du propriétaire. Propriété de c FCI. Droits de reproduction FCI.

All rights strictly reserved. Reproduction or issue to third parties in any form whatever is not permitted without written authority from the proprietor. Property of FCI. Copyright FCI.

PRODUCT NO.	DIM "X"		
71257-0000	4.25±0.1	3.5±0.1	5±0.1
71257-0000LF	OTHERS	36,67	1,17,34, 35,51,68



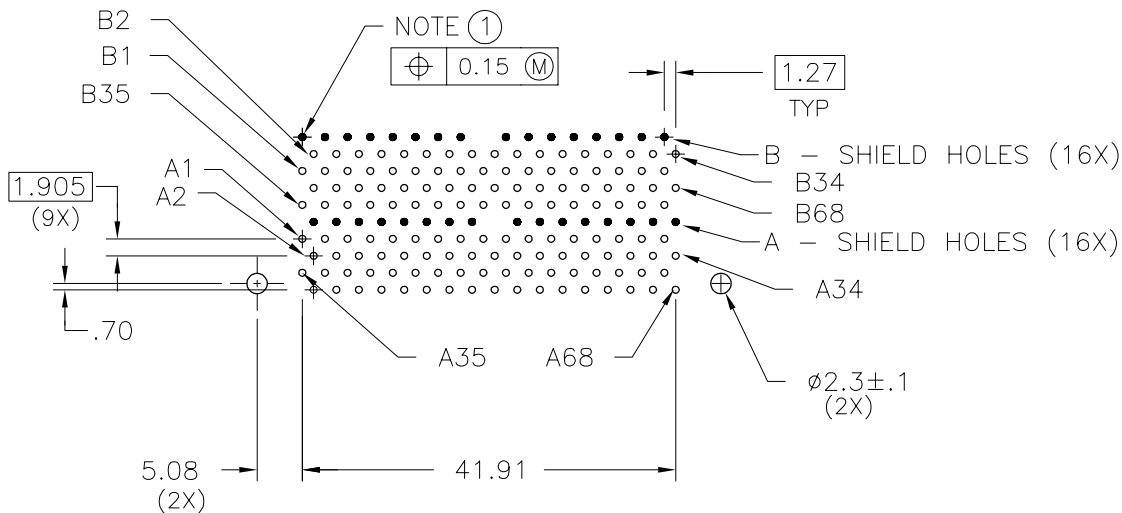
SECTION A-A
SCALE:4/1

NOTES:

- TRUE POSITION IS A FREE GRID TO THE PIN PATTERN ITSELF.
- MATERIAL:
PLASTIC: LCP UL94V-0 (BLACK)
PIN: PHOSPHOR BRONZE
- FINISH (PIN):
UNDER PLATING: 0.5 uM MIN. Ni
CONTACT AREA: 0.1 uM MIN GOLD OVER 0.5 uM MIN. Pd-Ni
SOLDER AREA: 2.5 uM MIN. Sn-Pb
LEAD FREE SOLDER TAIL PLATING 2um (80u") MIN. MATTE TIN
OVER 1.27um (50u") MIN. NICKEL UNDERPLATE.
- RECOMMENDED SCREW TORQUE: 1.0 TO 1.5 MAX in-lbs. (1.2-1.7 cm-kgs). RECOMMENDED HOLD DOWN: 2mm SCREWS (95121-002) AND HEX NUTS (92869-001).
- IF LEAD FREE PART NUMBER, THE HOUSING WILL WITHSTAND EXPOSURE TO 260° PEAK TEMPERATURE FOR 10 SECONDS IN A WAVE SOLDER APPLICATION WITH A 1.60mm MIN. THICK CIRCUIT BOARD.
- PACKAGING SPECIFICATION: GS-14-415.
PACKAGING OF LEAD FREE PRODUCTS MEETS LABELING AND PACKAGING SPECIFICATION GS-14-920.
- LEAD FREE PRODUCTS MEET EUROPEAN UNION DIRECTIVES AND OTHER COUNTRY REGULATIONS AS DESCRIBED IN GS-22-008.


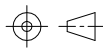
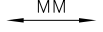
mat'l. code				tolerances unless otherwise specified		CUSTOMER COPY	 www.fciconnect.com		
ltr	ecn no	dr	date	linear	.X ±.3			projection	title
A	V60110	RHG	1/4/96	linear	.XX ±.13		RIGHT ANGLE DOUBLE DECK CARDBUS HEADER ASSEMBLY		
B	V70388	RHG	5/22/97	linear	.XXX ±.051		product family	MCS	
C	V12254	TFG	9/24/01	angles	0° ±2°	 MM scale 1:1	code	213	
D	V12254	HTB	10/8/03	dr	D. SHEAFFER		8/11/95	size	dwg no
E	N05-0057	DAI	03/30/05	engr	D. BRANN		8/11/95	A	71257
				chr	D. BRANN	8/11/95	sheet	1 of 2	
				appd	D. BRANN	8/11/95			
sheet index	revision sheet	E	E	1	2				

Tous droits strictement reserves. Reproduction ou communication a des tiers interdite sous quelque forme que ce soit sans autorisation ecrite du proprietaire. Propriete de c FCI. Droits de reproduction FCI.



NOTES:

- ① RECOMMENDED DIAMETER IS $\phi 1.0$. FOR PROCESSES USING PASTE REFLOW, HOLE MAY BE AS SMALL AS $\phi 0.79$.
- 2 ALL TOLERANCES ± 0.15 UNLESS NOTED.

mat'l. code				tolerances unless otherwise specified		CUSTOMER COPY		 www.fciconnect.com		
ltr	ecn no	dr	date	linear	.X $\pm .3$	projection	title			
E					.XX $\pm .13$			RIGHT ANGLE DOUBLE DECK CARBUS HEADER ASSEMBLY		
					.XXX $\pm .051$			product family MCS code 213		
				angles	0° $\pm 2^\circ$	 MM	size		sheet	
				dr	R. GRAPE 5/22/97		scale	A		2 of
				enr	D. BRANN 5/22/97			71257		
				chr	D. BRANN 5/22/97					
				appd	D. BRANN 5/22/97					
sheet index		revision sheet								

All rights strictly reserved. Reproduction or issue to third parties in any form whatever is not permitted without written authority from the proprietor. Property of FCI. Copyright FCI.